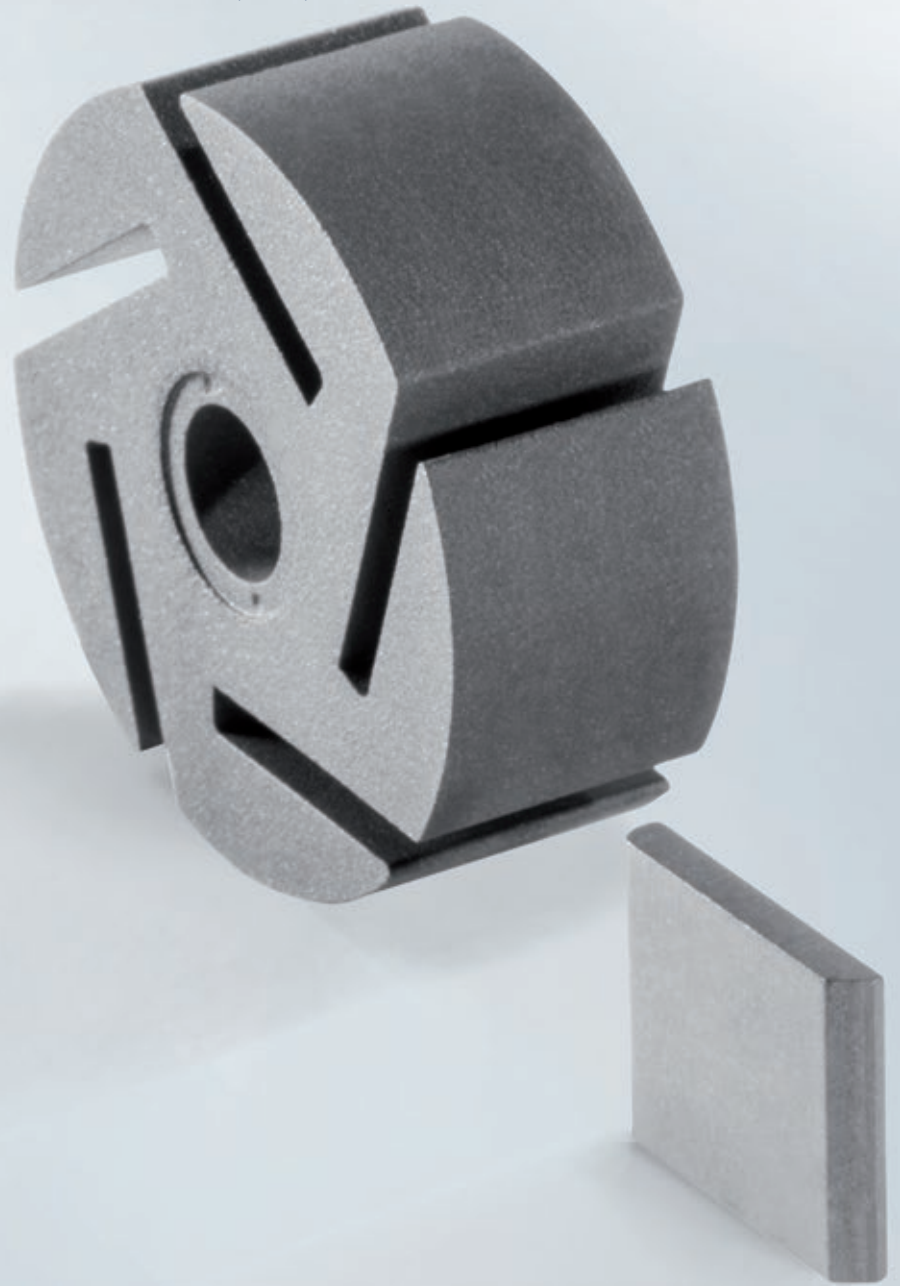




Mobility

Carbon-Graphite Rotor and Vanes

For rotary vane compressors and vacuum pumps



Carbon-Graphite Rotor and Vanes

Proven in highest quality systems, our pump components enable superior products. We aim for cooperative development of the best solutions of tomorrow.

The unique combination of the intrinsic properties combined in our carbon and graphite grades enable sturdy but lightweight compressor systems. The tribological and physical abilities of both grades have been customized especially for their application and require no additional lubrication or replacement during the lifetime of a car. The combination of high accuracy in our production processes and the ability of carbon to function in direct contact to many different counterparts at high sliding speeds help minimizing gap losses and enable the highest performance systems with the best efficiency.

Typical characteristics - Rotor:

- Material: Carbon Graphite
- Density: 1.75 g/cm³
- Bending Strength: 70 MPA
- CTE: 3.5 x10⁻⁶/K

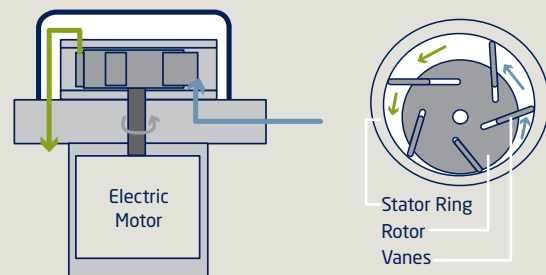
Typical characteristics - Vanes:

- Material: Carbon Graphite
- Density: 1.84 g/cm³
- Bending Strength: 70 MPA
- CTE: 4.5 x10⁻⁶/K

Your most important benefits:

- High dimensional precision
- Low material density
- Low friction forces
- Low wear rates
- High mechanical strength
- Highest machining precision for critical dimensions

Electrical rotary vane pumps are used to compress gases or evacuate systems



Applications

- Electrical vacuum pumps for break booster systems
- Compressors for tank leak diagnostics
- Secondary air pumps
- Compressors for comfort systems

Schunk Sintermetalltechnik GmbH

Mechanical Carbon Automotive
Rodheimer Str. 59
35452 Heuchelheim Germany
Phone: +49 641 608 - 1479
E-Mail: mca@schunk-group.com
schunk-mobility.com



14.08e/2021