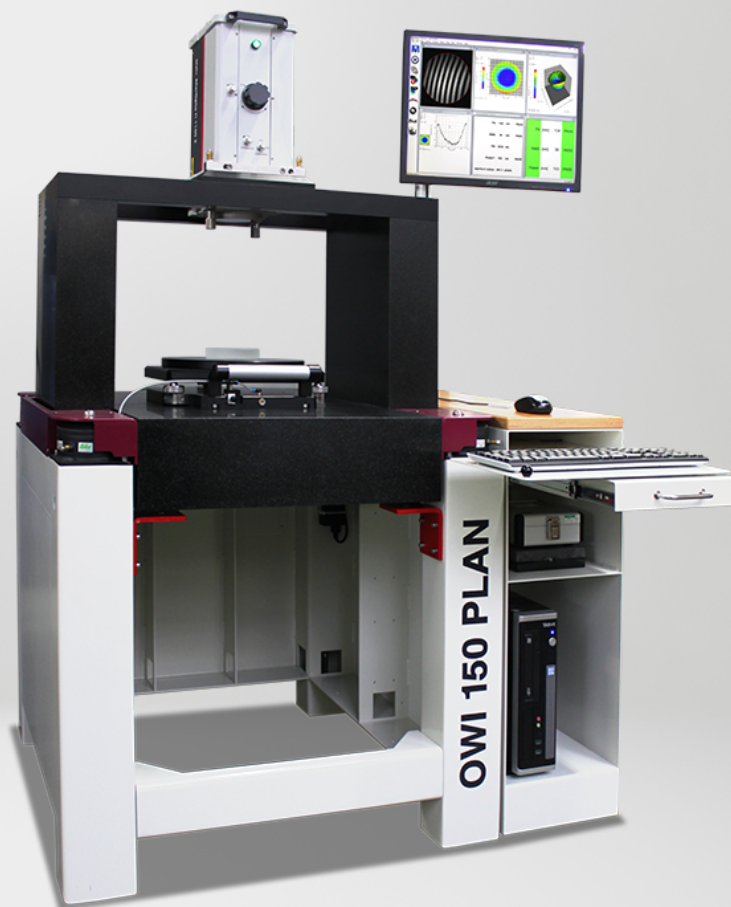




OptoTech

# OWI 150 PLAN

Non-Contact Testing and Measuring of Plano Surfaces

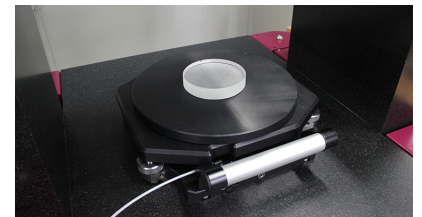
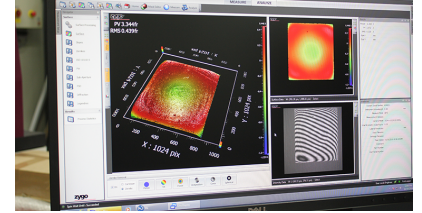


The workshop interferometer OWI 150 PLAN is the ideal measurement system for testing plano single surfaces or lenses produced as multi blocks.



## Technical data

	OWI 150 PLAN
Application	Non-Contact Testing and Measuring of Plano Surfaces
Measuring Height (without reference sphere)	0 mm - 230 mm
Measuring Range Diameter (4" reference spheres)	0 mm - 100 mm
Measuring Range Diameter (6" reference spheres)	0 mm - 150 mm
Probe Diameter	0 mm - 375 mm
Measuring Accuracy	$\lambda/10$ (depending on reference plate)
Air Pressure Requirement	5 bar
Dimensions	Width: 890 mm, Height: 2150 mm, Depth: 800 mm; Without Desk
Weight (approx.)	600 kg
Disclaimer	All data are subject to change without notice. Please verify details with OptoTech.



## Highlights

- High precision, vibration-absorbing granite base mounted on passive 4-point shock absorption system
- Avoidance of statically related disruptive factors through symmetrical portal structure
- Space-saving integration of the monitor. Monitor table not directly mounted to the measuring structure for better measuring results.
- Smooth, precise positioning of the test object via air bearing slide table with integrated 3-axis fine adjustment
- Adjustable monitor holder
- Different powerful interferometer module options (LT Ultra Modules 4" / 6" or Zygo QualiFire 4" / 6") and compatible software solutions for evaluating your measurement results available

## System advantages

- Surface and form error testing according to DIN ISO 10110-5
- Space-optimized footprint
- High precision measuring thanks to sophisticated damping system and optimized kinematics

## Options

- Positioning of the measuring objective by means of a sliding stage with air bearings and 3-axis fine adjustment
- Software for fringe analysis from Zygo
- Measuring in transmission mode