



OptoTech

# SPO 130 CNC

Low-Priced CNC-Controlled Polishing Machine for Optics up to  $\varnothing$  130 mm



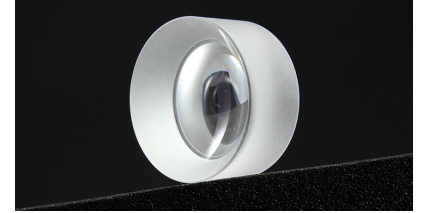
The OptoTech polishing machine SPO 130 CNC is the ideal low cost version of a high speed CNC polisher. The universal working range and the easy usage combined with up to date polishing technology offer a machine with an unmatched price-performance ratio.



# OptoTech

## Technical data

	SPO 130 CNC
Application	Low Cost CNC-Controlled High Speed Polishing Machine
Working Range Diameter	10 mm - 130 mm
Working Range Radius	+/- 10 mm to plano
Amount of Axes	3 (X, Z, B)
Control	Siemens Sinumerik 840 D Solution Line
Tool Spindle	Speed: 30 - 1500 rpm, infinitely variable; Interface: HD 25
Workpiece Spindle	Speed: 30 - 1500 rpm, infinitely variable; Interface: HD 25
Vacuum	-0.7 bar
Air Pressure Requirement	5 bar
Power Requirement (others on request)	9 kVA / 400 V / 50 Hz
Dimensions	Width: 1425 mm, Height: 1990 mm, Depth: 1765 mm
Weight (approx.)	2000 Kg
Disclaimer	All data are subject to change without notice. Please verify details with OptoTech.





## Highlights

- Low-Priced CNC-controlled polishing machine with oscillation movement of the polishing tool around the lens center
- 2-spindle version (Workpiece Spindle and Tool Spindle)
- Kinematic with CNC controlled swivelling movement in the radii center
- Integrated polishing tool correction technology OCT (OptoTech Correction Technology)
- OptoTech user interface, Microsoft Windows
- Input of all parameters via dialogue menu

## System advantages

- Low-Priced CNC-controlled polishing machine
- Energy-efficient motors: Possible energy savings up to 30% (depending on required power)

## Performance characteristics

Standard cycles:

- Polishing in SynchroSpeed mode
- Dressing of polishing tools
- Other Technologies available on request

## Options

- Exhaust Filter System for Mist Collection
- Polishing Tank
- Automatic handling for disk magazine and for DIN palette (with NC portal loader)