



OptoTech

# OptoTool

Tool design for Optical Manufacturing

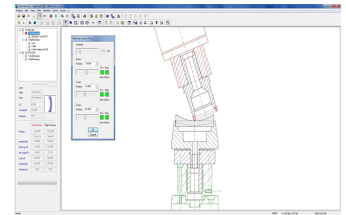


OptoTool is the innovative tool design-Software for your optical production made by OptoTech. Whether tool calculations, polishing foil calculations or workroom investigations with moving axes, OptoTool is the clever software for the complete range of complex tool design tasks.



## Technical data

|             | OptoTool   |
|-------------|--|
| Application | Tool-Design-Software for tools calculation, polishing foil calculation, workroom investigations etc. |



## Highlights

- Calculation of all tools needed to process spherical lenses
- Support of all spherical OptoTech machines, tools and processes
- Easy to upgrade to other machines, tools and processes
- Display of all needed drawings and assembly drawings including polishing-foil-calculation
- Easy changing of drawings due to parameter input
- Allocation of multiple machines to one project. Hereby tools can be copied to other machines.
- Workroom observation by axe moving In-workroom measurement
- Default values of drawings e.g. tolerances, can be changed by configuration data
- ITAR related drawings with special flag
- Machines with up to 6 spindles can be illustrated
- Easy handling by using shortcuts
- Tools (drawings) of other CAD systems can be checked via interface in the workroom

## Performance characteristics

Interfaces:

- DXF - Interface
- ASCII Interface for data exchange with external programs
- Import and export of calculated records

## Options

- Pellet calculation - To calculate a pellet layout for corresponding tools
- OptoCAD - To modify OptoTool drawings and to create new machine workrooms and drawings for tool macros