



OptoTech

SMP 501 CNC-2C

CNC-Controlled Plano Grinding Maschine with KombiTools for Cut-to-Polish Finish Grinding

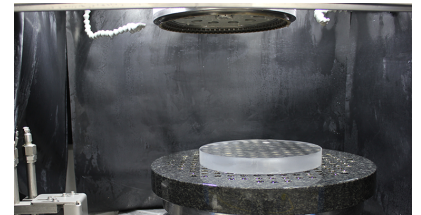


CNC-controlled plano grinding machine SMP 501 CNC-2C with KombiTools for cut to polish quality of plano surfaces made of glass or ceramics.



Technical Data

	SMP 501 CNC-2C
Application	Rough and Fine Grinding of Plano Surfaces
Working Range Diameter	0 mm - 500 mm
Control	Siemens Sinumerik 840D Solution Line
Tool Spindle	Speed: 0 - 2500 rpm; Interface: Hydro Expansion Chuck, Ø 40 x 60 mm DIN (Option)
Workpiece Spindle	Speed: 0 - 150 rpm; Interface: Vacuum Table (Magnetic Table Option)
Vacuum	-0.6 bar
Air Pressure Requirement	6 bar
Power Requirement (others on request)	17 kW
Dimensions	Width: 1450 mm, Height: 2300 mm, Depth: 2100 mm; Without operating panel
Weight (approx.)	2950 kg
Disclaimer	All data are subject to change without notice. Please verify details with OptoTech.



Highlights

- Two step processing in one work cycle with the KombiTool / KombiTool+ [\[link\]](#)
- Precise plano surface processing
- Edging possible
- Grinding to polishable quality due to optimised cutting parameters
- High dynamic digital drives for all axes
- Optimisation of cutting process due to multi-cutting steps with adaptable feed rate and spindle speed
- Hydro expansion clamping technology for fast and precise tool changes
- Design according to latest EMV- and CE-requirements

System Advantages

- Optimized machining parameters for cut-to-polish grinding
- Precise plano surface processing
- Minimal set-up time due to dialogue menu controlled user interface

Options

- Magnetic Table