



OptoTech

SPK 150 CNC

CNC-Controlled Polishing Machine for Optics up to \varnothing 150 mm



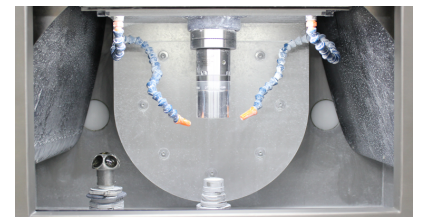
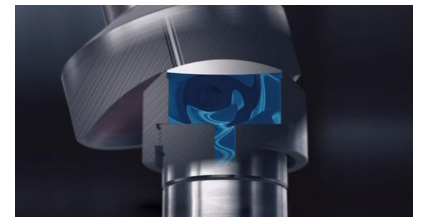
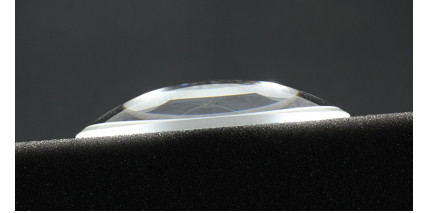
The polishing machine SPK 150 CNC is an allround high-end machine for high precision polishing of spherical and aspherical optical components. The SPK 150 CNC along with the SM 150 CNC generator form an ideal production cell with balanced cycle times between grinding and polishing. This combination forms a production line consisting of only two machines with no idle time while one machine waits for the other.



OptoTech

Technical data

	SPK 150 CNC
Application	Polishing Machine for a wide Range of Applications
Working Range Diameter	10 mm - 150 mm
Working Range Diameter (aspheres)	10 mm - 200 mm
Control	Siemens Sinumerik 840 Digital Solution Line
Max. Tool Diameter	280 mm
Tool Spindle	Speed: 0 - 2000 rpm; Interface: HD 25
Workpiece Spindle	Speed: 0 - 2000 rpm; Interface: HD 25
Vacuum	-0.7 bar
Air Pressure Requirement	6 bar
Power Requirement (others on request)	8 kW
Dimensions	Width: 2000 mm, Height: 1990 mm, Depth: 1850 mm; without loader
Weight (approx.)	2540 kg; without loader
Disclaimer	All data are subject to change without notice. Please verify details with OptoTech.





Highlights

- For polishing of a wide variety of optical components
- Innovative polishing technologies for optimal polishing results
- Pivoting Angle +/- 55° (+55°/-48° for version with automation)
- Coolant control
- LAN-Connection
- Preparation for filter exhausting device

Performance characteristics

Technologies:

- AST (Advanced Setup Technology, aka: Touch Setting)
- Polishing of optical components
- HydroSpeed Polishing for optimal polishing results and polishing without protective paint
- Ball pin processing for high aperture optics

Options

- 2-, 3- or 4-spindle version available
- Remote diagnostics
- Supported by OptoTool
- Automation (Portal loader with disc magazine and workpiece rinsing)
- Polishing tanks and Chiller for polishing tanks
- Filter exhausting device
- Vacuum device