



OptoTech

Stacker

Stacking Unit of Job Trays

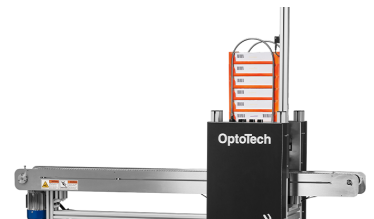
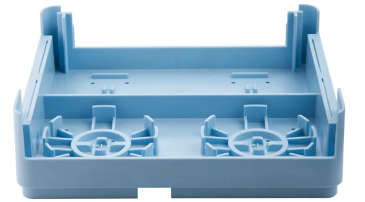


Simple but effective jobtray stacking and de-stacking unit including driven conveyor, clamping unit, sensors, separator and independent control (no connection to IQ-Control necessary)



Technical Data

	Stacker
Application	Automated Stacking of Job Trays
Conveyor Length	1800 mm
Max. Number of Stacked Job Trays	up to 10 job trays
Max. Number of Stacked Job Trays on Conveyor	up to 50 job trays
Power Requirement (others on request)	100-240V / 50/60Hz
Dimensions	Width: 1800 mm, Height: 1854 mm, Depth: 560 mm
Weight (approx.)	110 kg
Disclaimer	All data are subject to change without notice. Please verify details with OptoTech.



Highlights

- Stacking or de-stacking of up to 10 standard job trays with dimensions of 260x220x70-80 mm
- Jobtray height can be adjusted manually via positioning of sensors
- Conveyor length of 1800mm offers space for up to 50 jobtrays (5 rows of 10 stacked jobtrays) which can be stacked at the beginning or de-stacked at the end of the unit depending on version
- Version for standard jobtrays and version for small jobtrays available
- Can be operated with or without IQ-Control Software.
Note: Operation without IQ-Control software requires a controlling computer incl. license
- IQ-Control software available to monitor and control the unit directly from the IQ-Control panel
- Including signal lamp to display the current state of operation

System Advantages

- Fully automated stacking / de-stacking of jobtrays
- Can be configured as a standalone unit or integrated into the LAB automation (IQ-Control Software necessary)

Options

- Available in 2 versions:
 1. For standard jobtrays
 2. For small jobtrays
- IQ-Control Software including IQ-Control panel