



OptoTech

# ZYGO Mx™

Analysis Software from ZYGO

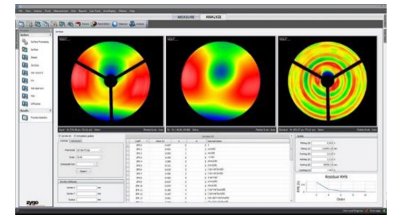


ZYGO's Mx™ software powers complete system control & data analysis for ZYGO laser interferometer modules, including interactive 3D maps, quantitative phase data, intuitive navigation, & built-in SPC with statistics, control charting, and pass/fail limits.



## Technical Data

	ZYGO Mx™
Application	Instrument Control and Data Analysis Software for ZYGO laser interferometers
Disclaimer	All data are subject to change without notice. Please verify details with OptoTech.



## Highlights

- The proprietary Mx™ analysis software from ZYGO offers a wide range of operating functions and a comprehensive data analysis suite, including Zernikes, slopes, PSD / MTF / PSF, prism / wedge angles, corner cubes and much more
- Simple and intuitive user interface for efficient operation. Interactive and detailed data plots show full surface data in 2D or 3D. Profile cuts, slope analysis and PSD views are also standard functions.
- SmartAveraging® technology is an exclusive feature of ZYGO's Mx™ software that automatically calculates and uses the optimal number of averages to achieve the desired noise reduction in the shortest possible time. The SmartAveraging technology guarantees valid measurement results.
- Flexible analysis - A variety of quantitative results, data views and filters are included
- Integrated SPC analysis tools track results, monitor pass-fail criteria and process statistics
- Interactive 3D diagrams - zoom, pan, rotate and update the results in real time
- For further information, please visit the ZYGO website: [ZYGO Mx™](http://ZYGO-Mx.com)