



OptoTech

# WZM 150 CNC

CNC-Controlled High Precision and Flexible Centering Machine



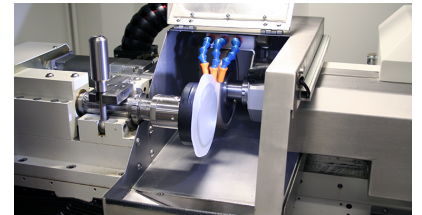
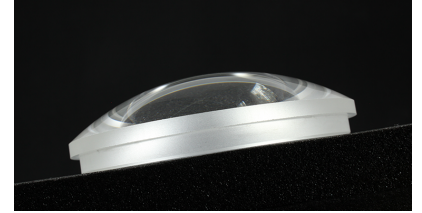
The WZM 150 CNC is a CNC controlled universal centering machine for optical components. The machine is working in exchangeable pin or exchangeable spindle mode.



# OptoTech

## Technical Data

	WZM 150 CNC
Working Range Diameter (depending on tool)	10 mm - 150 mm
Axis X	0 mm - 200 mm
Axis Z	0 mm - 100 mm
Additional B-Axis (WZM 150 CNC-B)	Speed: 1000 - 5000 rpm infinitely variable; Travel: +45° /- 90°
Cutting Speed	0 - 30 m/s variable speed
Feed Rate	0.001 - 5000 mm/min
Positioning Accuracy	± 0.001 mm (1µm)
Tool Diameter	Ø 120 - Ø 180 mm
Tool Spindle	Speed: 1000 - 6000 rpm, infinitely variable; Interface: Shaft with sleeve Ø 30h5 x 20 mm
Vacuum	-0.7 bar
Air Pressure Requirement	6 bar
Power Requirement (others on request)	12 kW / 400 V / 50Hz
Dimensions	Width: 1600 mm, Height: 2000 mm, Depth: 1800 mm
Weight (approx.)	3900 kg





## Highlights

- Designed for centering operations with maximum precision and flexibility
- The concept of an exchange spindle edging machine has been incorporated into a modern horizontal CNC machine base. This enables easy loading of spindle/workpiece units into a machine with ideal processing kinematics
- The lenses can be aligned and blocked on the optional AZP 200 HP blocking unit. The spindle, with the optic already attached, is then transferred into the WZM 150 CNC for an edging process of highest precision
- OptoTech offers the WZM 150 CNC to use a standard  $\varnothing$  42 mm spindle, however, the machine may be adapted to existing spindle designs allowing the use of tooling already on hand
- All available centering spindles can be adapted
- Machine base made of granite, a naturally stable material with low elasticity and thermal expansion properties
- All linear axes are equipped with linear drives and Heidenhain absolute scales, guaranteeing maximum precision, flexibility and reliability of operation

## System Advantages

- Designed for maximum precision and flexibility for centering operations
- Easy loading of spindle/workpiece units into a machine with ideal processing kinematics

## Options

- C-Axis Package for Truncations
- Workpiece Table with Integrated B-Axis (WZM 150-B)
- Optional AZP 200 HP blocking unit