



OptoTech

OptoTech User Interface

Standard User Interface for all CNC-Controlled Machines for Precision Optics

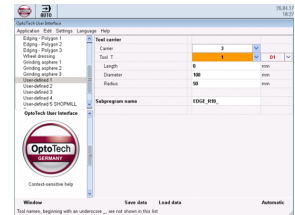


Standard user interface for all CNC-controlled machines for precision optics



Technical Data

	OptoTech User Interface
Application	Standard user interface for all CNC-controlled machines for precision optics



Highlights

- Standard user interface for all CNC-controlled fine-optical machines
- Customized adjustments possible
- Standard processes Grinding: Spheres, planes, edge processing (outer diameters and chamfers). Customized extensions, e.g. Drilling of holes, contour grinding and much more
- Standard processes Polishing: Polishing and dressing of spheres. Customized extensions, e.g. polish of holes, polishing of cones, polishing of bevels and many others
- **F-Cube** add-on for OptoTech grinding machines for grinding aspheres and free-form surfaces
- **POLyCAM** add-on for OptoTech polishing machines for polishing aspheres and free-form surfaces
- All processes depend on the tool technology used