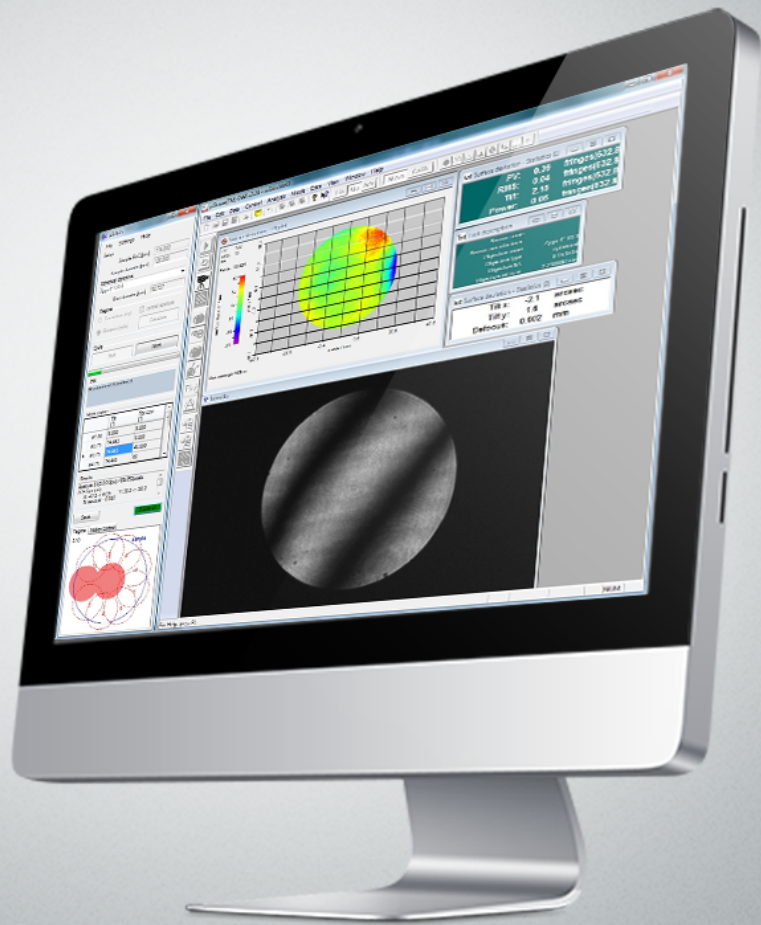




OptoTech

μ Stitch

Stitching Software (Add-On)

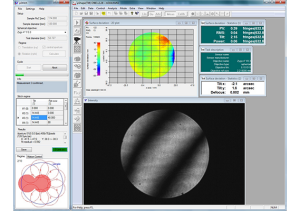


μ Stitch is a stitching software and is used in conjunction with μ Shape (add-on) for our MSI Series. It enables the measurement of the entire surface of spherical (shape and radius errors) and plano (shape errors) optics that cannot be captured in a single measurement due to their dimensions.



Technical Data

μStitch



Highlights

- Add-On software which enables the measurement of the entire surface of spherical (shape and radius errors) and plano (shape errors) optics that cannot be captured in a single measurement due to their dimensions
- Based on the test optic and reference sphere data, the software independently calculates a stitching regime that covers the entire test area. The required axis positions are also calculated for each sub-aperture
- With the appropriate hardware, an automated measurement of all sub-apertures is possible. The individual measurements of the sub-apertures are triggered by the μShape software and visualized there.
- μStitch then calculates all individual measurements into a measurement file of the entire surface
- The data of the overall measurement are transferred to the μShape software and can be processed and evaluated there just like a single measurement
- The software recognizes when optics can be measured with a single measurement and enables automated radius measurement
- μStitch supports different ways of moving the interferometer and the device under test