



S!M PATI®

Installation manual

S!MPATI® Service
from S!MPATI® 4.90

Executing Simpati as a Microsoft Windows service

Imprint

Installation instructions for Simpati Service from Simpati 4.90
Original instructions
Document ID: en 2025.06

Publisher/producer

Weiss Technik GmbH
Greizer Straße 41-49
35447 Reiskirchen
Germany

Telephone: +49 6408 84-0
Fax: +49 6408 84-8710
Email: info@weiss-technik.com
Website: <http://www.weiss-technik.com>

This document and all contents contained therein are the property of Weiss Technik GmbH and may not be reproduced without express permission.

All trademarks and trade names mentioned in this document are the property of their respective manufacturers/owners.

© 2025 Weiss Technik GmbH

TABLE OF CONTENTS

| | | |
|----------|----------------------------------------------------------------------------------|----|
| 1 | NOTES ON THE DOCUMENT | |
| 1.1 | Features in the document. | 5 |
| 1.2 | Applicable documents | 5 |
| 2 | SIMPATI SERVICE | |
| 2.1 | Product description. | 6 |
| 2.2 | Notes | 7 |
| 2.3 | Explanation of the desktop short cuts. | 7 |
| 3 | INSTALLATION/UNINSTALLATION | |
| 3.1 | System requirements | 8 |
| 3.2 | Download installation file for Simpati Service. | 8 |
| 3.3 | Installing Simpati Service | 8 |
| 3.4 | Uninstalling Simpati Service. | 10 |
| 4 | STARTUP | |
| 4.1 | Starting Simpati Service for the first time (starting Simpati as a service) | 11 |
| 4.2 | View started services for system processes of Simpati | 12 |
| 4.3 | Logging on to the computer as Windows user "Simpati" (optional) | 13 |
| 5 | OPERATION | |
| 5.1 | Starting Simpati Service manually (starting Simpati as a service) | 14 |
| 5.2 | Stopping Simpati Service (exiting Simpati as a service) | 15 |
| 5.3 | Opening the Simpati user interface | 15 |
| 5.4 | Closing the Simpati user interface | 16 |
| 6 | SETTINGS | |
| 6.1 | Changing the start behaviour of Simpati as a service | 17 |
| 6.2 | Adapting the password in Simpati Service | 18 |
| 6.3 | Setting the validity of the password for local Windows user "Simpati" | 20 |
| 6.4 | Changing local user "Simpati" to domain user | 21 |
| 6.5 | Simultaneous use of Simpati TimeLabs and Simpati Service | 24 |
| 7 | CONTACT | |

1 NOTES ON THE DOCUMENT

1.1 Features in the document

| Text highlight | Explanation | Example |
|----------------|-----------------------------------------------------|--------------------------------------------------------------------------------|
| ► | instruction | ► Select Settings . |
| → | Cross reference | ► Set light → chap. x.x |
| bold | Text on user interface | ► Select Settings . ► Pick Green from the Colour list. |
| [] | Button | ► Select [End] . |
| > | Several entries to be selected one after the other. | ► In the menu, select Settings > Audio > Volume . |

Table 1-1 Explanation of text highlights

1.2 Applicable documents

These installation instructions are valid only together with the installation and operating instructions for the Simpati software. You can download the instructions for Simpati from the software products section of our website (website → back of this document).

2 SIMPATI SERVICE

2.1 Product description

With Simpati Service, all Simpati system processes can be run as a service under Microsoft Windows and are automatically started when the operating system is restarted.

As soon as Simpati Service starts, Simpati is started automatically and invisibly in the background. Simpati thus automatically builds up communication to the test systems and the Simpati background processes (e.g. archiving) start executing their tasks again.

The advantage of running Simpati as a Windows service is that users can log off the computer without Simpati being exited. This is possible because a separate Windows user "Simpati" is set up for Simpati by Simpati Service.

Programs started as Windows services are executed invisibly in the background. For this reason, these programs are not displayed on the Windows task bar.

Windows user account with user name "Simpati" (Windows user "Simpati")

During the installation of Simpati Service, a local Windows user with the user name "Simpati" is created on the computer. You assign the password for the Windows user "Simpati" during installation of Simpati Service.

Since Simpati runs under its own Windows user, different users can log on and off at the computer with their own Windows user accounts without Simpati being exited. Simpati continues running in the background. Simpati is only exited when Simpati Service is stopped.

2.2 Notes

Simpati Service no longer starts automatically if the password has expired



If the password for the Windows user “Simpati” has expired, Simpati is no longer automatically started as a service.

Change the password for the Windows user “Simpati” before it becomes invalid. Tip: Adjust the settings so that the password for the Windows user “Simpati” never expires.

Simultaneous use of Simpati TimeLabs and Simpati Service



When using Simpati TimeLabs and Simpati Service at the same time, Simpati TimeLabs must also be run with the Windows user “Simpati” → 6.5 “Simultaneous use of Simpati TimeLabs and Simpati Service” (page 24).

Modification rights of the Windows user “Simpati” for directories



The Windows user “Simpati” automatically receives change rights in the entire installation directory of Simpati.

If individual files (e.g. recordings) are to be saved in other directories, the Windows user “Simpati” must also receive change rights for these directories. If necessary, ask your system administrator.

No copying of files to Simpati by drag & drop



People logged on at the computer are logged on with their personal Windows user account. Through Simpati Service, Simpati runs under its Windows user “Simpati” which has its own Windows user account.

Since the Windows user accounts differ, no files can be copied by simply dragging onto the Simpati user interface.

2.3 Explanation of the desktop short cuts

When Simpati Service is installed, shortcuts are created on the computer desktop.


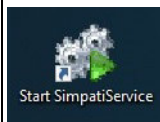
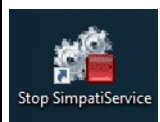
| Shortcut | Designation | Function |
|-------------------------------------------------------------------------------------|-----------------------------|-----------------------------------------------------------------------------------------------|
|  | Simpati Menu | The main menu of the Simpati user interface opens. |
|  | Start SimpatiService | Simpati is started as a Windows service and all background processes for Simpati are started. |
|  | Stop SimpatiService | Simpati and all background processes for Simpati are stopped. |

Table 2-1 Desktop shortcuts for Simpati Service

3 INSTALLATION/UNINSTALLATION

3.1 System requirements

The system requirements for Simpati Service can be found on our website in the software products section (website → back of this document).

3.2 Download installation file for Simpati Service

- ▶ Download the Simpati Service installation file from the software products section of our website (website → back of this document).

3.3 Installing Simpati Service

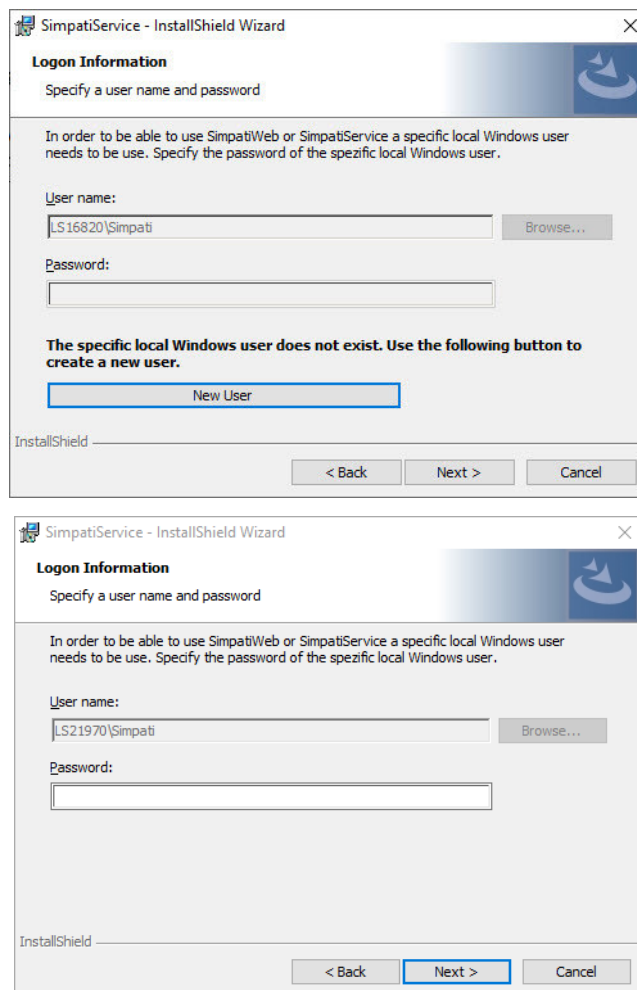
Prerequisite

- Simpati from software version 4.90 must be installed.
- No Simpati software version older than 4.70 must be installed on the computer.
- The system requirements for Simpati Service must be fulfilled.
- You need administrative rights on the computer.

Procedure:

- ▶ Execute the installation file for Simpati Service.
- ▶ Select the language in which you want to be guided through the installation.
- ▶ Select [**Continue**].
- ▶ Accept the licence conditions and select [**Continue**].
- ▶ If multiple versions of Simpati are installed:
 - ▶ When prompted, select the Simpati version for which Simpati Service is to be carried out.
 - ▶ Select [**Continue**].

- ✓ One of the windows for entry of logon information appears, depending on whether the Windows user “Simpati” has already been created or not.



- ▶ If the user “Simpati” has not yet been created, carry out the following steps:
 - ▶ Select [**New user**].
 - ▶ Specify desired password for the Windows user “Simpati”.
 - ▶ Select [**OK**].
- ▶ If the Windows user “Simpati” has already been created, enter logon information for the Windows user “Simpati”.
 - ▶ Select [**Continue**].
 - ▶ Select [**Install**].
 - ▶ Select [**Finish**].
- ✓ Corresponding short cuts have been created on the desktop → 2.3 “Explanation of the desktop short cuts”(page 7).

3.4 Uninstalling Simpati Service

Prerequisite

- You must have administrative rights for the computer.

Procedure:

- ▶ Open the control panel of the computer.
- ▶ Select **Programs > Uninstall program**.
- ▶ Select **SimpatiService**.
- ▶ Select [**Uninstall**].
- ▶ Select [**Yes**].

4 STARTUP

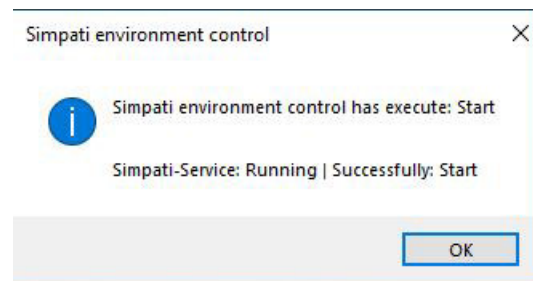
4.1 Starting Simpati Service for the first time (starting Simpati as a service)

Prerequisite

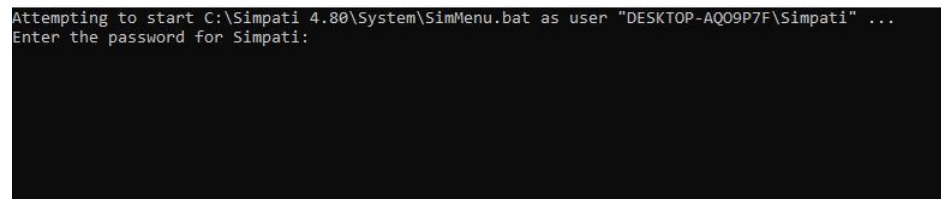
- The password for the Windows user “Simpati” must be known.
- You must have administrative rights for the computer.

Procedure:

- ▶ Open the **Start SimpatiService** shortcut on the desktop.
 - ✓ A message is displayed indicating that the start was successful.



- ✓ A window for entering the password is displayed.



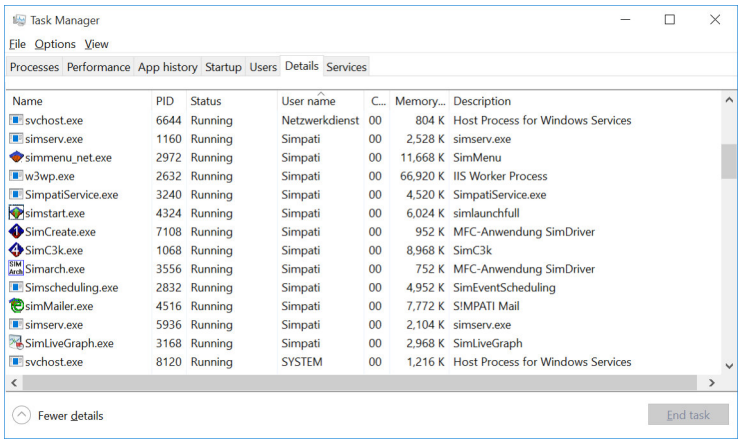
- ▶ Enter the password for the Windows user “Simpati” and press the Enter key. There is no visual feedback, entry of the password cannot be seen.

4.2 View started services for system processes of Simpati

Running Simpati system processes are listed in the task manager of the computer. Depending on the particular access rights, every hidden background process is displayed here as well. The processes are executed within the context of the Windows user “Simpati”.

Procedure:

- ▶ Open the Windows Task Manager.
- ✓ Task Manager is displayed.



- ▶ Select **Details** tab.

4.3 Logging on to the computer as Windows user “Simpati” (optional)

Following installation of Simpati Service, you should log on to the computer as the Windows user “Simpati” once. Through this, the Windows default settings are loaded (e.g. standard apps for image display, profiles).

If you do not carry out this one-off logon, all the relevant functions are still available in Simpati.

The following functions would be restricted, for example:

- Displaying camera images from Simpati TimeLabs in the graphical evaluation (SimViewer) in Simpati.
- Open the operating instructions in Simpati (depending on the local IT settings).

Prerequisite

- The password for the Windows user “Simpati” must be known.

Procedure:

The following section describes the logon procedure, using the example of Windows 10.

- ▶ Close all programs and restart the computer.
- ▶ Log on in the Windows logon window using the following data:
 - ▶ Enter the user name **Simpati** in the **User name** field.
 - ▶ Enter the password for the Windows user “Simpati” in the **Password** field.
 - ▶ Press the Enter key on the keyboard or the arrow symbol next to the field.
 - ✓ Windows is started.
- ▶ Wait until Windows has carried out the default settings for the Window user.
- ▶ Restart the computer and log on using your personal Windows user account.

5 OPERATION

5.1 Starting Simpati Service manually (starting Simpati as a service)

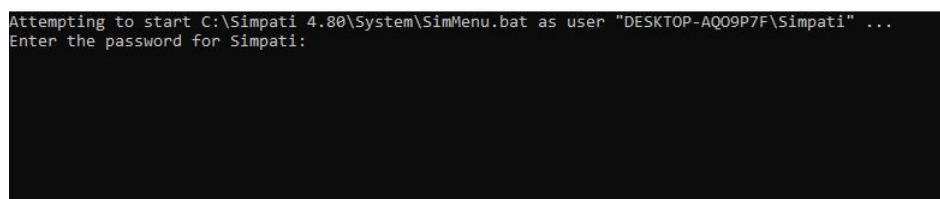
By default, Simpati Service starts automatically when Windows is started. The start behaviour can be changed → 6.1 “Changing the start behaviour of Simpati as a service” (page 17).

Prerequisite

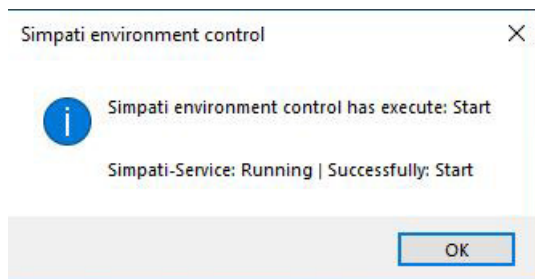
- The password for the Windows user “Simpati” must be known. The password is only required the first time Simpati Service is started and if the password has been changed.
- Manual start of Simpati Service must not have been disabled.
- You must have administrative rights for the computer.

Procedure:

- ▶ Open the **Start SimpatiService** shortcut on the desktop.
- ▶ When the window for entering the password opens, enter the password for the Windows user “Simpati” and press the Enter key. There is no visual feedback, entry of the password cannot be seen.



- ✓ A message is displayed indicating that the start was successful.



- ▶ Select [OK].

5.2 Stopping Simpati Service (exiting Simpati as a service)

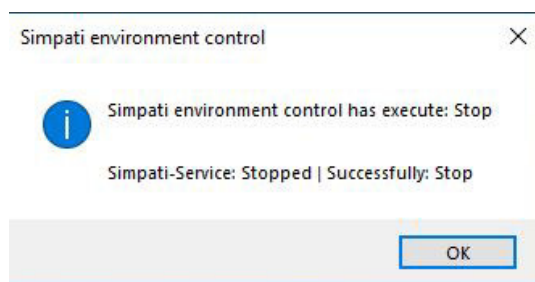
When you stop Simpati Service, Simpati and all Simpati background processes are exited.

Prerequisite

- You must have administrative rights for the computer.

Procedure:

- ▶ Open the **Stop SimpatiService** shortcut on the desktop.
 - ✓ A message is displayed indicating that the stop has been executed successfully.



- ▶ Select [OK].

5.3 Opening the Simpati user interface

Even if Simpati runs as invisibly as a service in the background, you can open the Simpati user interface as described here.

Prerequisite


- Simpati Service must be started.

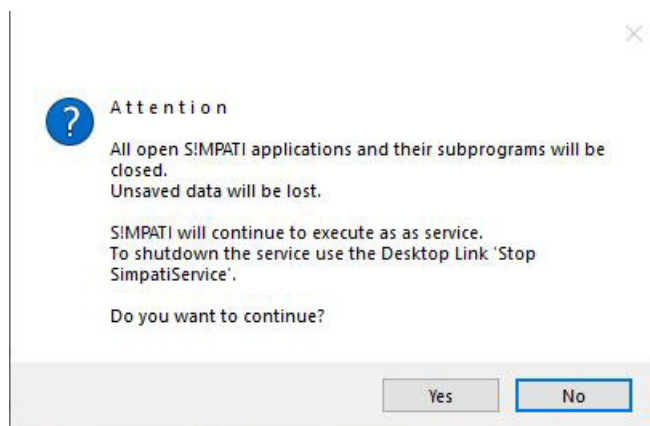
Procedure:

- ▶ Open the **Simpati Menu** shortcut on the desktop.
 - ✓ The main menu of the Simpati user interface is displayed.

5.4 Closing the Simpati user interface

Procedure:

- ▶ In the main menu of Simpati, select the  button.
 - ✓ A message is displayed that Simpati is being run as a service.



- ▶ Select [Yes].
 - ✓ The Simpati user interface is closed.

6 SETTINGS

6.1 Changing the start behaviour of Simpati as a service

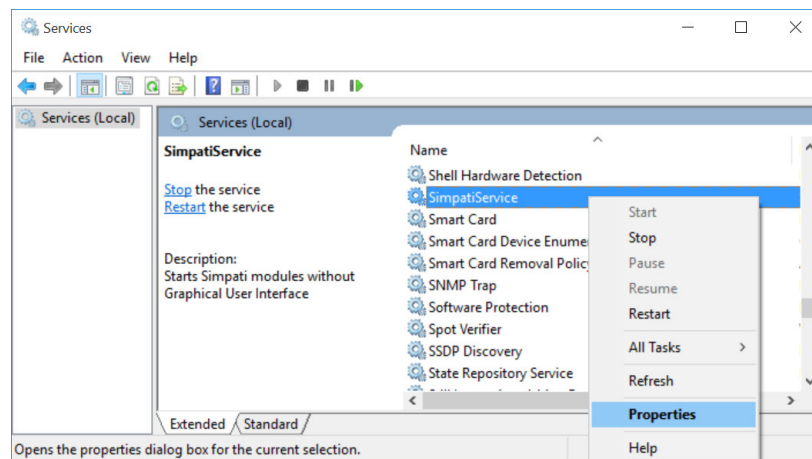
By default, Simpati Service is automatically started when Windows is started. You can change this start behaviour.

Prerequisite

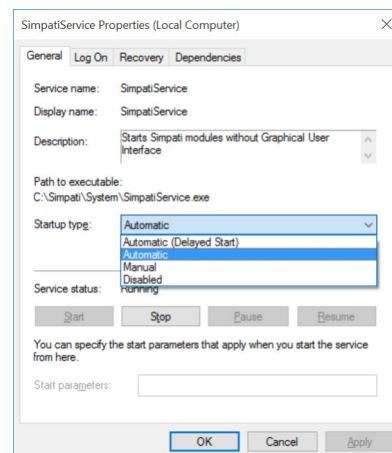
- You need administrative rights on the computer.

Procedure:

- In Windows, select **Control panel > All control panel items > Administrative tools > Services**.
- ✓ The window with the services is displayed.



- Right-click the **SimpatiService** entry and select **Properties**.
- ✓ A window with the properties of the **SimpatiService** service is displayed.



- Select **General** tab.

- ▶ Select the desired start-up behaviour in the **Start-up type** drop-down list:
 - **Automatic (Delayed start)**: Simpati starts with all background processes after all configured services with the start-up type **Automatic** have been started.
 - **Automatic**: Simpati starts automatically with Windows with all background processes.
 - **Manual**: Simpati and the background processes are not started automatically. It can be started manually later → 5.1 “Starting Simpati Service manually (starting Simpati as a service)” (page 14).
 - **Disable**: Disables the automatic start of Simpati and the background processes. Manual start-up is also prevented by this setting.
- ▶ Select [OK].

6.2 Adapting the password in Simpati Service

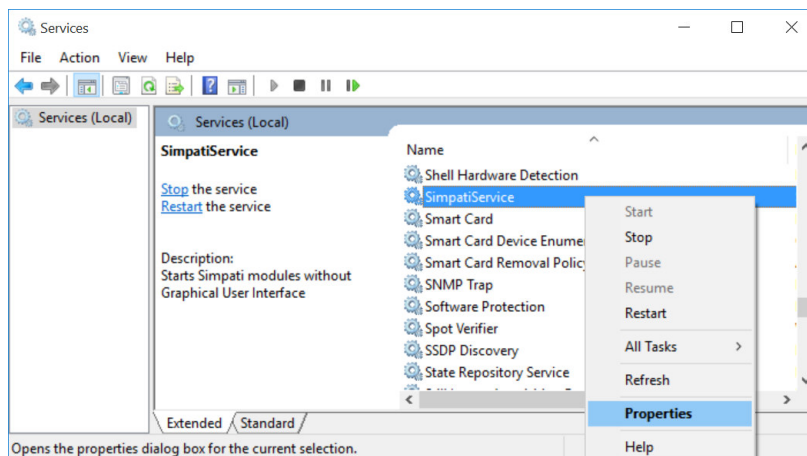
Simpati Service only needs the password for the Windows user “Simpati”. If the password for the Windows user “Simpati” has been changed, you have to adapt the password in Simpati Service.

Prerequisite

- The password for the Windows user “Simpati” must be known.
- You need administrative rights on the computer.

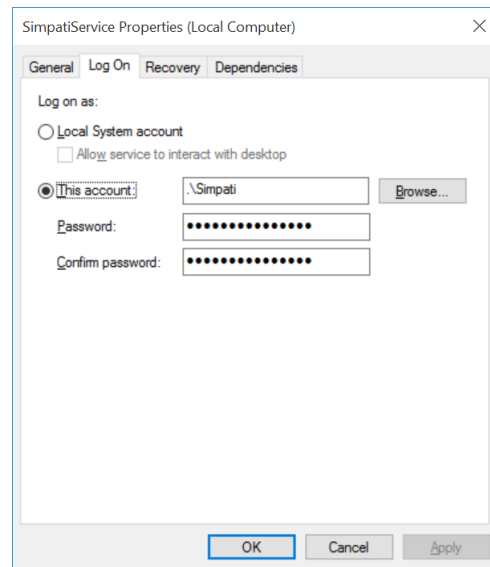
Procedure:

- ▶ Stop Simpati Service.
- ▶ In Windows, select **Control panel > All control panel items > Administrative tools > Services**.
- ✓ The window with services is displayed.



- ▶ Right-click the **SimpatiService** entry and select **Properties**.

- ✓ A window with the properties of the **SimpatiService** service is displayed.



- ▶ Select **Log on** tab.
- ▶ Enter the new password for the Windows user "Simpati" in the **Password** input field.
- ▶ Enter the new password again in the **Confirm password** input field.
- ▶ Select **[OK]**.
- ▶ Start Simpati Service and enter the new password when prompted.

6.3 Setting the validity of the password for local Windows user “Simpati”

There are the following setting options available for the validity of the password:

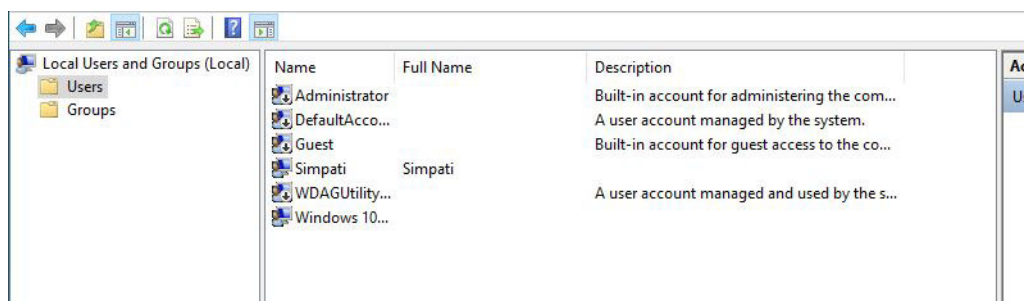
- Password is permanently valid (default)
- Password expires after a specific period (Windows preset 72 days)

Prerequisite

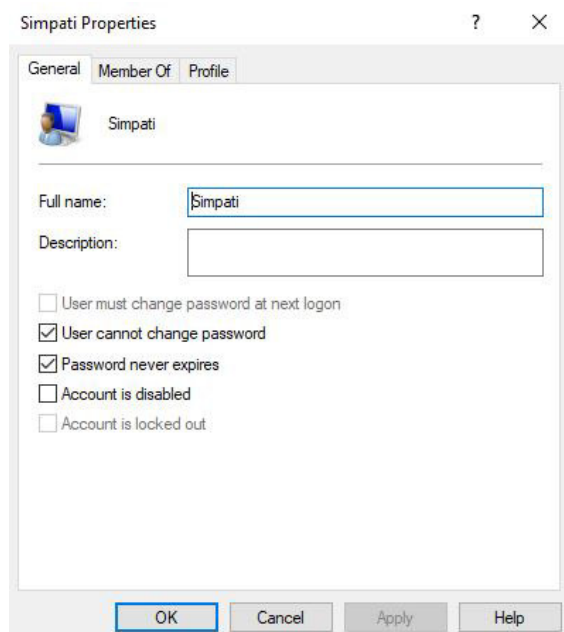
- You need administrative rights on the computer.

Procedure:

- ▶ In Windows select **System control > User accounts > Edit local users and groups**.
- ✓ The window for managing local users and groups is displayed.



- ▶ Right-click the **Simpati** entry and select **Properties**.
- ✓ The window **Properties of Simpati** is displayed.



- ▶ If the password is to expire after a certain period, disable the selection field **Password never expires**.

- ▶ If the password is to be permanently valid, enable the selection field **Password never expires**.
- ▶ Select [OK].

6.4 Changing local user “Simpati” to domain user

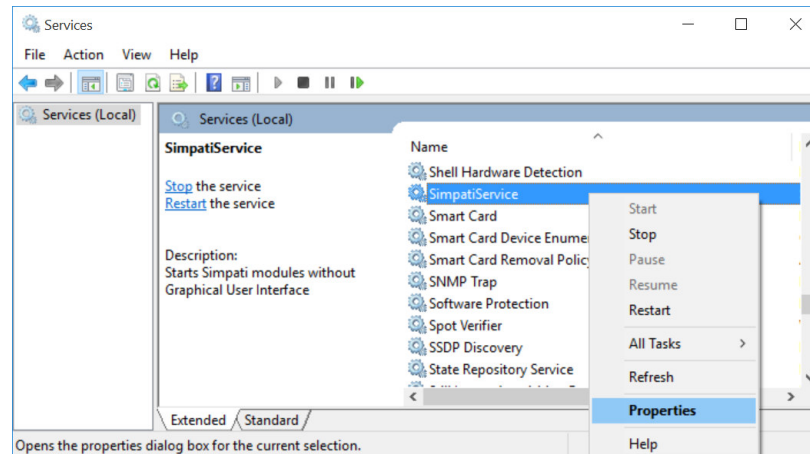
Simpati Service automatically creates the Windows user “Simpati” as the local Windows user “Simpati” on the computer. You can change the local Windows user “Simpati” to a domain Windows user. If necessary, ask your system administrator if this change is necessary.

Prerequisite

- Name of the domain must be known.
- Abbreviation of the Windows domain user must be known.
- The Windows domain user must not be the domain admin.
- Windows user to be used for the change must be a Windows user that has been created in a Windows domain.
- You need administrative rights on the computer.

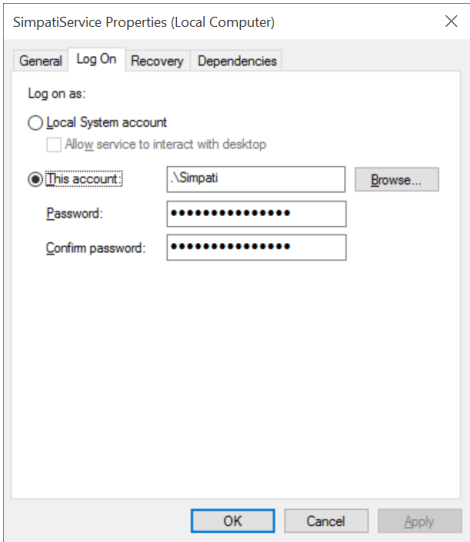
Procedure:

- ▶ In Windows, select **Control panel > All control panel items > Administrative tools > Services**.
- ✓ The window with the services is displayed.



- ▶ Right-click the **SimpatiService** entry and select **Properties**.

✓ A window with the properties of the **SimpatiService** service is displayed.

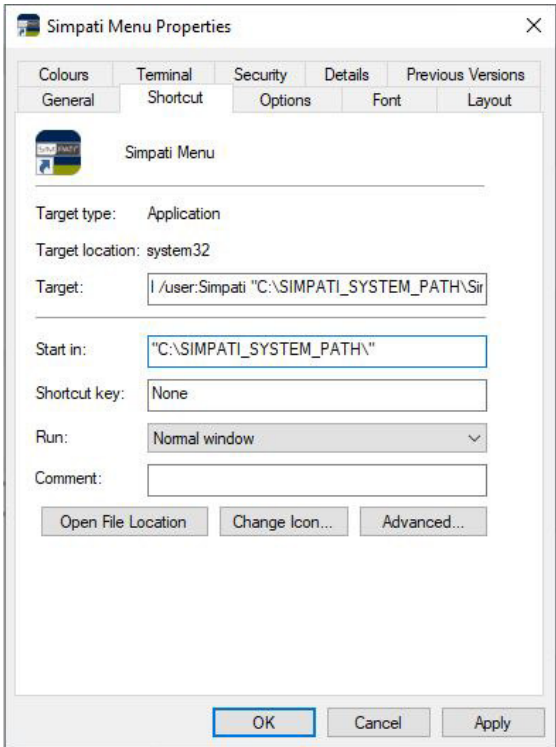


- ▶ Select **Log on** tab.
- ▶ In the **This account** field, enter the abbreviation for the domain Windows user.

| Example | |
|-------------------------------------------------------------------------|---------------------|
| Default setting: | .\Simpati |
| Changed to Windows user mjohn in the domain example.org : | .\example.org\mjohn |

- ▶ Select **[OK]**.

- ▶ Right-click the **SimpatiService** shortcut and select **Properties**.
- ✓ The window with the properties is displayed.



- ▶ In the **Target** field, adapt the target after the parameter **/user:** in the format {Domain}\\{User}. Make sure there is a space between user and "C:\.

| Example | |
|------------------------------------------------------------------------------|------------------------------------------------------------------------------------------------------------------|
| Default setting: | C:\WINDOWS\system32\runas.exe /savecred /user: Simpati "C:\SIMPATI_SYSTEM_PATH\SimMenu.bat" |
| Changed to the domain example.org and the Windows user mjohn : | C:\WINDOWS\system32\runas.exe /savecred / user: example.org\mjohn "C:\SIMPATI_SYSTEM_PATH\SimMenu.bat" |

- ▶ Select **[OK]**.

6.5 Simultaneous use of Simpati TimeLabs and Simpati Service

When using Simpati TimeLabs and Simpati Service at the same time, Simpati TimeLabs must also be run with the Windows user "Simpati".

Prerequisite

- You need administrative rights on the computer.

Procedure:

- ▶ On the desktop, right-click the link to Simpati TimeLabs **SimTimeLabs**.
- ▶ Select **Properties** on the context menu.
 - ✓ The window **Properties of SimTimeLabs** is displayed.
- ▶ Select the **Shortcut** tab.
- ▶ In the input field **Target**, change the user to **user:Simpati** and change the target path as follows:

```
C:\Windows\System32\runas.exe /savecred /user:Simpati "C:\*\System\SimTimeLabs.exe"
```

At the point marked with an asterisk (*), enter the name of the folder in which Simpati is installed on the computer.

Example: If Simpati 4.90 is installed in the folder Simpati 4.90:

```
C:\Windows\System32\runas.exe /savecred /user:Simpati "C:\Simpati 4.90\System\SimTimeLabs.exe"
```

- ▶ Make sure that there is a space between **user:Simpati** and **"C:**.
- ▶ Select **[OK]**.

7 CONTACT

Service hotline: +49 180 5666556

Passionately innovative.

We work in partnership to support companies in research,
development, production and quality assurance.
With 23 companies in 18 countries at 29 locations.



weiss**technik**

For a safe future.

Environmental Simulation

The first choice for engineers and researchers for innovative, safe environmental simulation facilities. In fast motion, our test systems can simulate all the influences in the world as well as for instance in space. In temperature, climate, corrosion, dust or combined stress tests. With a very high degree of reproducibility and precision.

Air Solutions

As the leading provider of clean rooms, climate technology and air dehumidification, we consistently ensure optimal climatic conditions for people and machines. For industrial production processes, in hospitals, mobile operation tents or in the field of information and telecommunications technology. From project planning to implementation.

Heat Technology

Experienced engineers and designers develop, plan and produce high-quality, reliable heat technology systems for a broad range of applications from heating and drying cabinets to microwave systems and industrial furnaces.

Pharmaceutical Technology

With decades of experience and know-how, we guarantee the most sophisticated clean air and containment solutions. Our comprehensive and innovative range of products includes barrier systems, laminar flow systems, safety workbenches, isolators, airlocks and stability test systems.

Weiss Technik GmbH

Greizer Straße 41-49
35447 Reiskirchen/Germany
T +49 6408 84-0

Beethovenstraße 34
72336 Balingen/Germany
T +49 7433 303-0

info@weiss-technik.com
weiss-technik.com



Test it. Heat it. Cool it.